



# TOTAL SOLAR ECLIPSE VIEWING GUIDE

MONDAY  
AUGUST 21, 2017

## TWO MINUTES OF TOTAL AWE ...

### It's an Awesome Experience!

- View of the beautiful solar corona
- Eerie effects of daytime darkness
- Cosmic alignment of Sun, Moon, Earth
- Once-in-a-lifetime opportunity



## ... NEAR THE CENTER OF THE PATH

### Benefits of Experiencing Awe

- Pleasantly relaxes the nervous system
- Opens the heart and mind
- Promotes empathy, cooperation
- Fosters a sense of connectedness

## SITE SELECTION



Select a location within the **70-mile wide path of totality**. The closer to the centerline, the longer totality lasts. Those outside the path will see only partial phases, and will miss the solar corona.



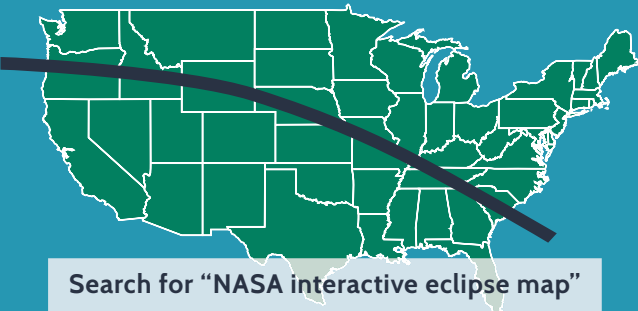
**Seek the best chances for clear skies.** Lowest rates of cloud cover are in some western parts of the path. Check local climate data for details.



**Find an unobstructed view.** Make sure your view of the Sun is not blocked by buildings, trees, mountains, or anything else.



**Be ready for last-minute mobility.** You might be able to drive out from under a cloud cover and find clear skies where you can see totality.



Search for "NASA interactive eclipse map"

## EQUIPMENT

**No special equipment is required to view the solar corona during totality.** Simply look up and take in the magnificent view during the few minutes of darkness. Equipment that may enhance your eclipse viewing experience includes:



**Eclipse glasses, pinhole projector.** Use these to view the partial phases of the eclipse to protect your eyes from possible damage.



**Smart phone.** Handy for checking last-minute weather, traffic, and social media updates.



**Binoculars.** Use only for viewing totality, NOT for partial phases, even through eclipse glasses.



**Camera.** It takes special equipment to get good eclipse images. Instead, capture video of people's reactions right after totality.

## PREPARATION



**Take the day off.** August 21st is a Monday, so don't miss this awesome event.



**Book lodging now.** If you need to stay overnight, make plans as soon as possible.



**Get an early start.** Roads and highways are likely to be crowded on eclipse day.



**Bring folding chairs.** Especially ones that recline. The eclipse lasts 2+ hours from start to finish.

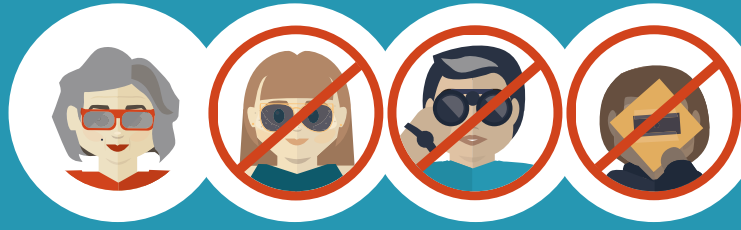


**Take along essentials.** Don't forget food, water, sun-screen, etc. And have a backup "restroom plan."

## EYE SAFETY

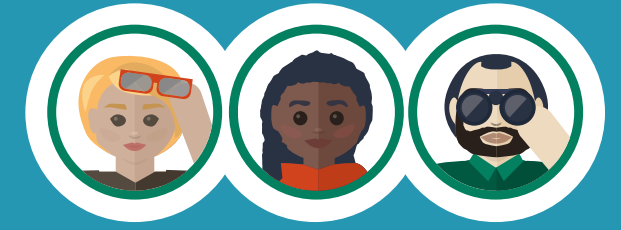
### During Partial Phases

- Partial phases: when any portion of the Sun's disk is visible.
- Use approved eclipse viewing glasses.
  - Use a pinhole projector.
- DO NOT USE sunglasses.**  
**DO NOT USE binoculars, even if viewed with eclipse glasses.**  
**DO NOT USE unapproved filters or home-made devices.**



### During Totality

- Totality is the brief period when the Moon completely covers the Sun to reveal the solar corona, lasting about two minutes for places near the centerline of the 2017 path.
- Remove your eclipse glasses during totality!
  - View the solar corona directly with the naked eye.
  - Use binoculars to get a more detailed view of the corona.



## WHAT TO LOOK FOR



### Partial Phase Before Totality

- Moon begins to cover the Sun
- Crescent images of the Sun
- Noticeable darkening (T -15 min)
- Shadow Bands (T -3 min)
- Bailey's Beads (T -30 sec)
- Diamond Ring effect (T -5 sec)
- Shadow sweeps from the West

### During Totality

- Corona
- Prominences
- Chromosphere
- Stars and planets
- Temperature drop
- Eerie daytime darkness
- Plant and animal reactions

### Partial Phase After Totality

- Shadow moves eastward
- Diamond Ring effect
- Bailey's Beads
- Shadow Bands
- Gradual lightening of sky
- Crescent images of the Sun
- Gradual uncovering of the Sun

## SAVOR YOUR EXPERIENCE

**Group viewing etiquette.** Be respectful of others nearby. Avoid flash photos, loud music, or disturbances by pets or children. Don't block others' line of sight.

**Leverage your feelings of awe.** This powerful emotion can inspire you to make positive changes for yourself and others.

**Get ready for another eclipse.** The next total solar eclipse occurs on July 2, 2019 in Chile and Argentina. The next one in the United States occurs on April 8, 2024, visible from Texas to Maine.



July 2, 2019



April 8, 2024



Adapted from: *ECLIPSE. History. Science. Awe.*  
Bryan Brewer, Third Edition, 2017  
[www.EclipseBook.com](http://www.EclipseBook.com)