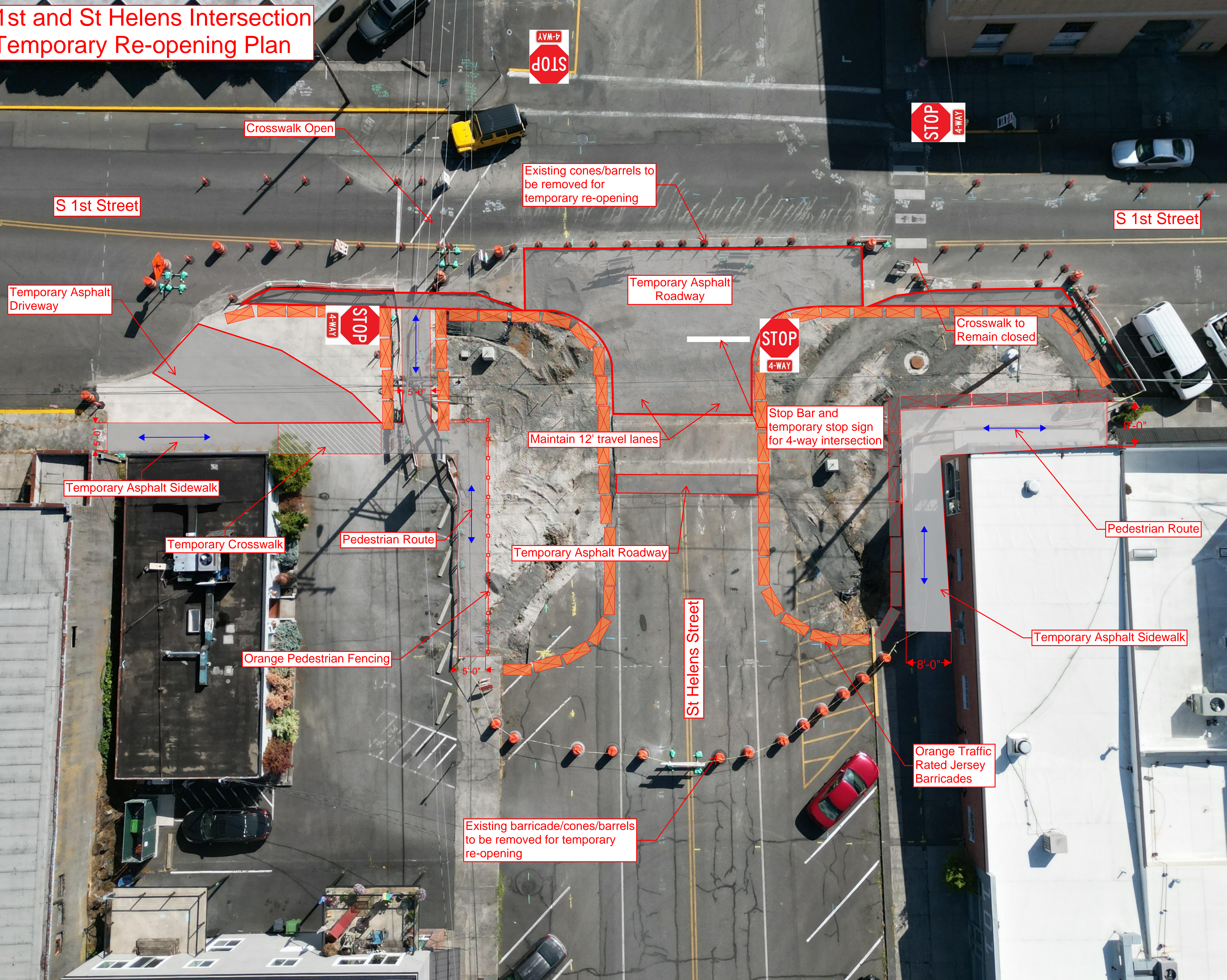


S 1st and St Helens Intersection Temporary Re-opening Plan



Crosswalk Open

Existing cones/barrels to be removed for temporary re-opening

S 1st Street

S 1st Street

Temporary Asphalt Driveway

Temporary Asphalt Roadway

Crosswalk to Remain closed

STOP 4-WAY

STOP 4-WAY

Stop Bar and temporary stop sign for 4-way intersection

Maintain 12' travel lanes

Temporary Asphalt Sidewalk

Pedestrian Route

Temporary Crosswalk

Pedestrian Route

Temporary Asphalt Roadway

Temporary Asphalt Sidewalk

Orange Pedestrian Fencing

Orange Traffic Rated Jersey Barricades

Existing barricade/cones/barrels to be removed for temporary re-opening

St Helens Street

5'-0"

5'-0"

5'-0"

8'-0"

8'-0"