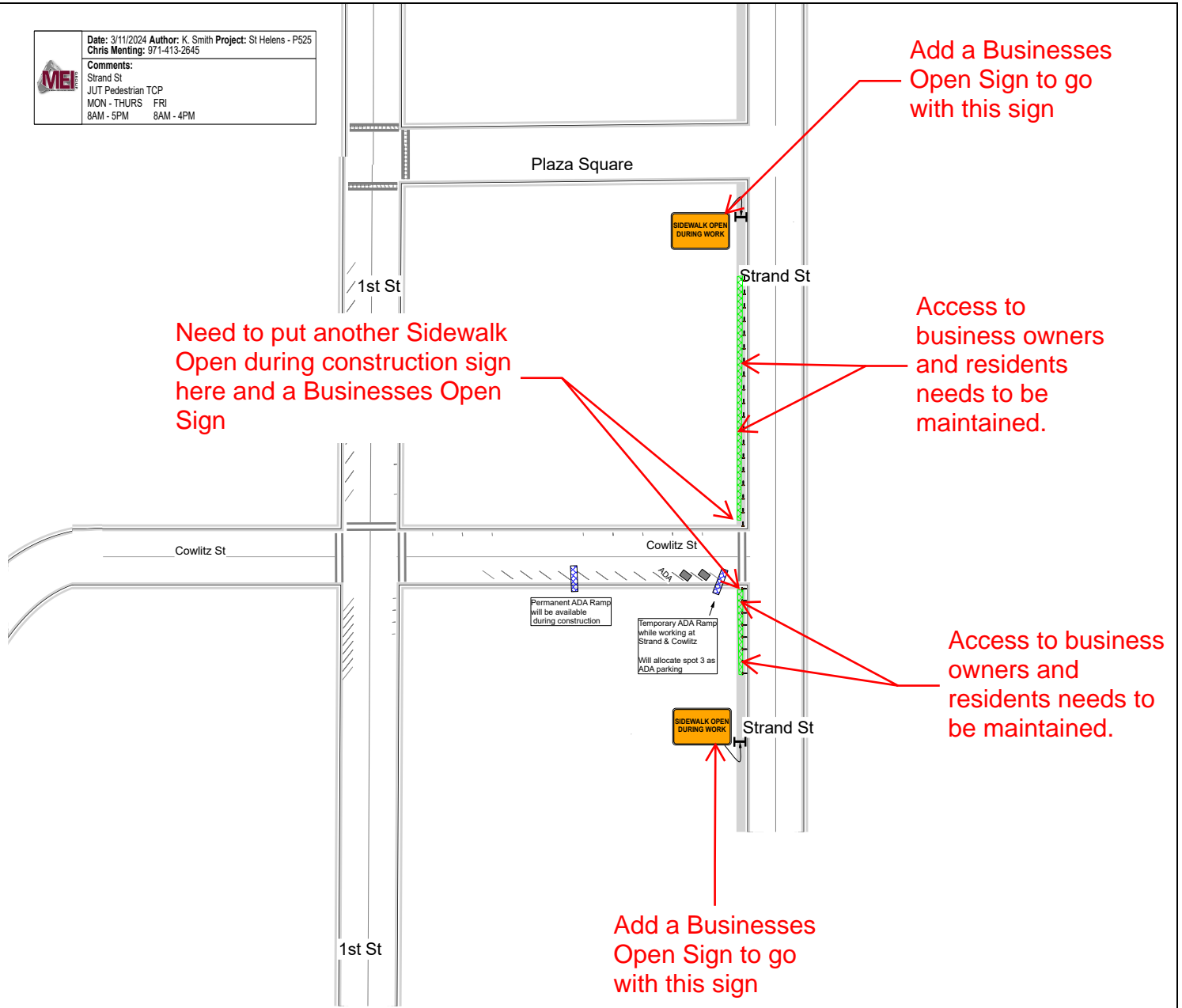


Date: 3/11/2024 **Author:** K. Smith **Project:** St Helens - P525
Chris Menting: 971-413-2645
Comments:
 Strand St
 JUT Pedestrian TCP
 MON - THURS FRI
 8AM - 5PM 8AM - 4PM



Conditions:

- 1) All TCD set in accordance of MUTCD
- 2) Cones minimum height of 28" spacing 20' max, tapers at 10' max corner radius
- 3) Traffic control signage used is secured by pins or sandbags.
- 4) 10' travel lanes will be maintained.
- 5) Signs and supports shall not be placed in areas designated for bikes &/or pedestrians
- 6) The Contractor shall publish notification of lane or road closures in The Chronicle newspaper
- 7) The Contractor shall notify residents and businesses within an affected section of road by door hanger of road closures stating the date(s) of closure, limits of street closure, hours of construction, and detours a minimum of 48 hours before closure.
- 8) Agency notification list for road construction/street closures will be contacted.
- 9) Will delineate a temporary walking path for pedestrians.

★ SPEED (mph)	Sign Spacing (ft)			Max. Channelizing Device Spacing (ft)
	A	B	C	
20 - 30	100	100	100	20
35 - 40	350	350	350	20
45 - 55	500	500	500	40
60 - 70	700	700	700	40
Freeway	1000	1500	2640	40

NOTES:
 • Place traffic control devices on 10 ft. spacing for Intersection and access road.
 • When necessary, sign spacing may be adjusted to fit site conditions. Limit spacing adjustments to 30% of the "A" dimension for all speeds.

★ SPEED (mph)	*L* VALUE FOR TAPERS (ft)				BUFFER "B" (ft)
	W = Lane or Shoulder Width (feet closed or shifted)				
	W = 10	W = 12	W = 14	W = 16	
25	105	125	145	165	75
30	150	180	210	240	100
35	205	245	285	325	125
40	265	320	375	430	150
45	330	400	470	540	180
50	400	480	560	640	210
55	475	565	655	745	240
60	560	660	760	860	285
65	650	760	870	980	325
70	750	870	990	1110	365
FREEWAYS					
55	1000	1000	1000	1000	250
60	1000	1000	1000	1000	285
65	1000	1000	1000	1000	325
70	1000	1000	1000	1000	365

NOTES:
 • For Lane closures where W < 10': use *L* value for W = 10'.
 • For Shoulder closures where W < 10': use *L* value for W = 10' or calculate *L* using formula, for speeds ≥ 45: L = WS, Speeds < 45: L = 5*W/60, S = Speed, W=Width